

Case Study: Retinal Detachment

CLINICAL SETUP

Outpatient Clinic

Volume: 100 patients per week • Imaging: KineXis software • Patient: Supine and dilated

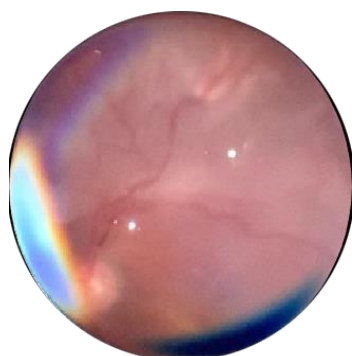
Equipment: MIO with 20D condensing lens

PATIENT INFORMATION

Sex	Male
Age	55
Nationality	Indian
Reason for examination	Sudden painless diminution of left eye vision
Known conditions	Pseudophakia

CONCLUSIONS

Fundus examination with the MIO revealed Left Eye -Near Total- Retinal detachment with Horse shoe tear in ITQ involving macula. The patient and his wife were shown the images of his condition, and these were also sent to the referring doctor. A decision was made immediately to go for Belt Buckle and 23-gauge vitrectomy with endolaser and silicon oil and his vision recovered to Left eye-6/36. The benefit from the usage of the MIO was that it made the situation clearer for the patient, helping to take immediate decision. Referring surgeon also found it easier to convince the patient for emergency retina surgery.



Retinal Detachment



Horseshoe Tear